

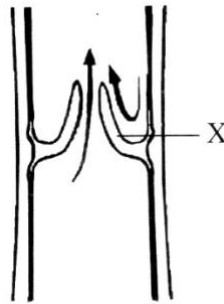
SOALAN OBJEKTIF

1. Which of the following substance transports oxygen?
Antara bahan berikut. yang manakah mengangkut oksigen?

P
R

- A** Haemolymph
Hemolimfa
- B** Haemoglobin
Hemoglobin
- C** Fibrinogen
Fibrinogen
- D** Plasma
Plasma

2. The diagram shows the longitudinal section of a vein
Rajah menunjukkan keratan membujur suatu vena

F
S

What is the role of X?
Apakah peranan X?

- A** Decrease the size of the lumen of the vein
Mengurangkan saiz lumen pada vena
- B** Prevent the back flow of blood
Mengelakkan pengaliran balik darah
- C** Increase the blood pressure in the vein
Meningkatkan tekanan darah dalam vena
- D** Speed up the flow of blood in the vein
Meningkatkan kelajuan pengaliran darah

3. Which of the arteries carries blood with the lowest oxygen concentration?
Arteri yang manakah mengangkut darah dengan kepekatan oksigen yang paling rendah

R

- A** Renal artery
Arteri renal
- B** Hepatic artery
Arteri hepatic
- C** Mesentric artery
Arteri Mesenteri
- D** Pulmonary artery
Arteri pulmonari

4. Which of the following description is true about blood cells?
Antara keterangan berikut, yang manakah benar tentang sel-sel darah?

P

S

	Blood Cell	Description
A	Erythrocyte <i>Eritrosit</i>	Biconcave in shape to enable the exchange of shape while passing the blood capillary <i>Berbentuk dwicekung supaya boleh berubah bentuk semasa melalui kapilari darah</i>
B	Platelet <i>Platlet</i>	Without nucleus and involved in the blood clotting mechanism <i>Tanpa nuklues dan terlibat dalam mekanisme pembekuan darah</i>
C	Monocytes <i>Monosit</i>	Produced in the bone marrow and produce antibodies to destroy pathogens <i>Dihasilkan di sumsum tulang dan menghasilkan antibodi</i>
D	Neutrophil <i>Neutrofil</i>	Without granules and destroy pathogens by phagocytosis <i>Tanpa granul dan memusnahkan patogen secara fagositosis.</i>

5. Which types of leucocytes are capable of carrying out phagocytosis?
Antara leukosit berikut, manakah boleh menjalankan proses fagositosis?

P

S

I Basophils

Basofil

II Eosinophils

Eosinofil

III Neutrophils

Neutrofil

IV Monocytes

Monosit

A I and II only

B III and IV only

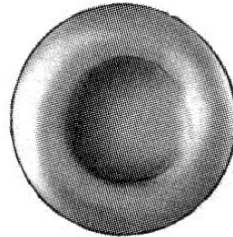
C I, II and IV only

D II, III and IV only

6. The diagram shows a type of human blood cell.
What is the main function of this cell?

P

R

*Rajah menunjukkan sejenis darah manusia**Apakah fungsi utama sel darah tersebut?*A To transport carbon dioxide
*Mengangkut karbon dioksida*B To produce antibodies
*Menghasilkan antibodi*C To transport oxygen
*Mengangkut oksigen*D To produce antitoxins
Menghasilkan antitoksin

7. What is the function of septum in a heart?

Apakah fungsi septum dalam jantung?

F
S

- A** To ensure that blood flows smoothly from one chamber of the heart to another
Untuk memastikan darah mengalir dengan lancar dari satu ruang jantung ke ruang jantung yang lain
- B** To separate oxygenated blood from deoxygenated blood
Untuk mengasingkan darah beroksigen dan darah terdeoksigen
- C** To ensure that the heart is divided into two sides
Untuk memastikan jantung dibahagikan kepada dua bahagian
- D** To strengthen the structure of the heart
Untuk menguatkan struktur jantung.

8. The following statement are the characteristics of blood transported by the blood vessel in the human body.

Pernyataan berikut adalah ciri-ciri darah yang diangkut oleh suatu salur darah dalam badan manusia.

F
T

- High concentration of oxygen
Kepekatan oksigen yang tinggi
- Low concentration of carbon dioxide
Kepekatan karbon dioksida yang rendah
- High blood pressure
Tekanan darah tinggi

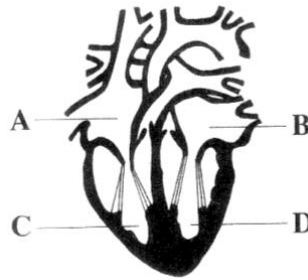
What is the blood vessel?

Apakah salur darah itu?

- A** Aorta / *Aorta*
- B** Vena cava / *Vena cava*
- C** Pulmonary artery / *arteri pulmonari*
- D** Pulmonary vein / *vena pulmonari*

9. The diagram shows a cross-section of the human heart.
Rajah menunjukkan satu keratan rentas jantung manusia,

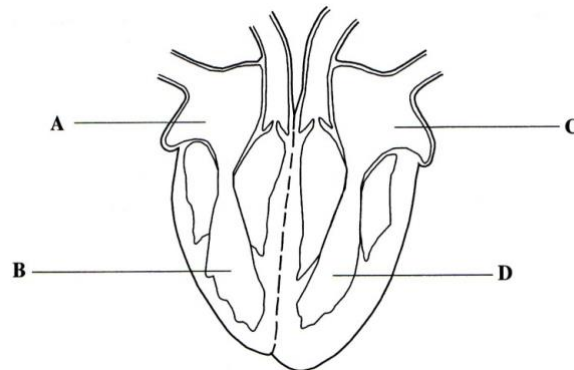
P
R



Which part **A**, **B**, **C** or **D** pumps the blood into the pulmonary artery?
*Antara bahagian **A**, **B**, **C** dan **D**, yang manakah mengepam darah ke dalam arteri pulmonari?*

10. The diagram shows a longitudinal section of the human heart.
Rajah menunjukkan suatu keratan membujur jantung manusia.

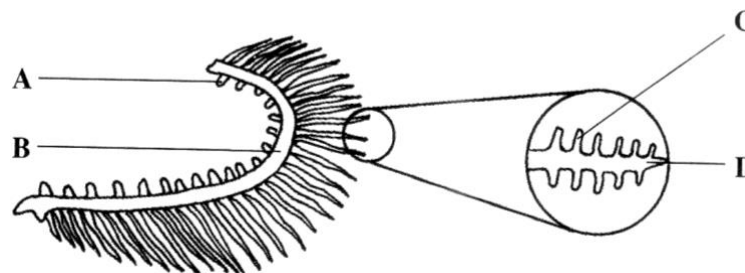
P
R



Which of the labeled parts, **A**, **B**, **C** or **D**, pumps blood to the lung?
*Antara bahagian berlabel **A**, **B**, **C** dan **D**, yang manakah mengepam darah ke peparu?*

11. The diagram shows gills of a fish
Rajah menunjukkan insang ikan

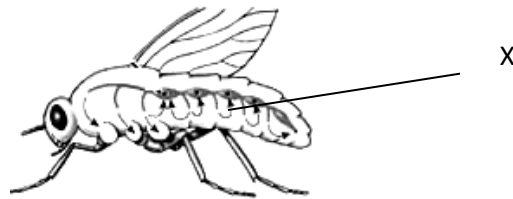
F
R



Which part **A**, **B**, **C** or **D** has the highest rate of gaseous exchange?
*Antara bahagian **A**, **B**, **C** dan **D**, yang manakah mempunyai kadar pertukaran gas yang paling tinggi?*

12. The diagram shows an open circulatory system of an arthropod .
Rajah menunjukkan sistem peredaran terbuka seekor artropoda

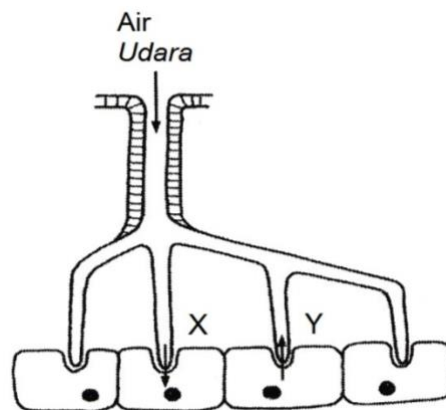
P
R



What is the colourless fluid found in X ?
Apakah cecair tidak berwarna yang terdapat dalam X?

- A Lymph fluid / *Bendalir limfa*
 - B Plasma / *Plasma*
 - C Haemolymph / *Hemolimfa*
 - D Interstitial fluid / *Bendalir tisu*
13. The diagram shows parts of the tracheal system of insects.
Rajah menunjukkan sebahagian dari sistem trakea pada serangga

F
R

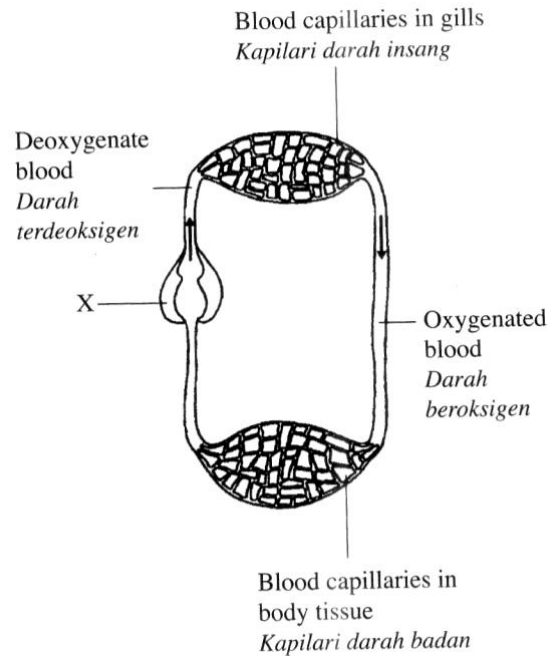


What are substances X and Y?
Apakah bahan X dan Y?

	X	Y
A	Oxygen <i>Oksigen</i>	Carbon dioxide <i>Karbon dioksida</i>
B	Carbon dioxide <i>Karbon dioksida</i>	Oxygen <i>Oksigen</i>
C	Oxygen <i>Oksigen</i>	Water <i>Air</i>
D	Water <i>Air</i>	Oxygen <i>Oksigen</i>

14. The diagram shows the circulatory system of a fish.
Rajah menunjukkan sistem peredaran darah ikan.

F
R

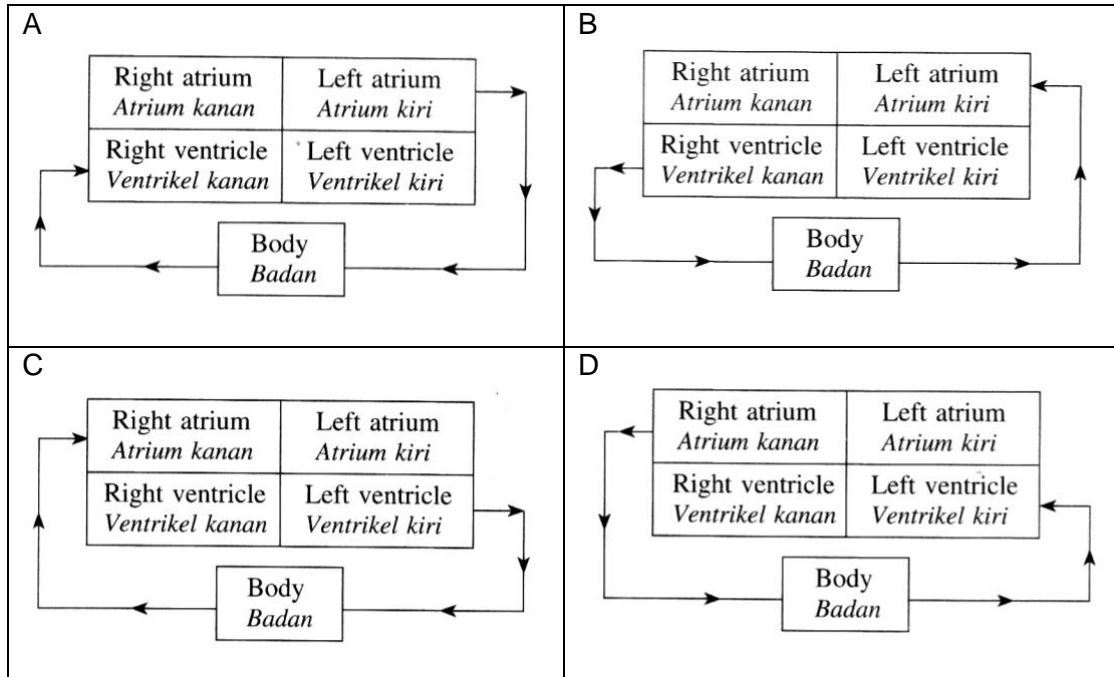


What is organ X?

- | | |
|--------------------------|--------------------------|
| A Lung / Peparu | B Stomach / Perut |
| C Kidney / Ginjal | D Heart / Jantung |
15. A student steps on a rusty iron nail while playing football in a field.
What treatment should be given to the student?
Seorang murid terpijak paku besi karat semasa bermain bola di padang
Apakah rawatan yang harus diberikan kepada murid itu?
- A
S
- A. Polio vaccine injection
Suntikan vaksin polio
 - B. Typhoid vaccine injection
Suntikan vaksin typhoid
 - C. Diphtheria serum injection
Suntikan vaksin difteria
 - D. Antitetanus serum injection
Suntikan vaksin antitetanus

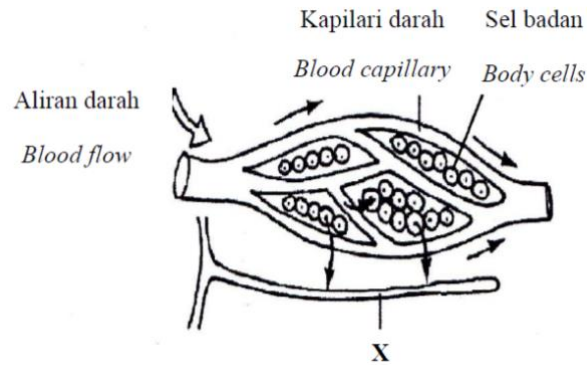
16. Which schematic diagram shows the systemic circulatory system?
 Rajah yang manakah yang menunjukkan sistem peredaran sistemik?

A
S



17. Diagram shows capillaries, tissues and vessel X.
 Rajah menunjukkan kapilari darah, tisu dan salur X

P
R



- A Blood / *Darah*
- B Plasma / *plasma*
- C Lymph / *Bendalir limfa*
- D Interstitial fluid / *Cecair intertis*

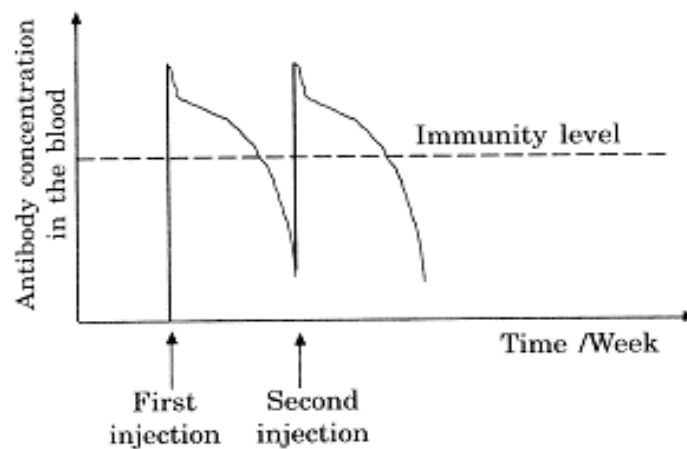
18. A gardener experiences non-stop bleeding after hurting his foot while gardening.
 A What will happen if his blood is unable to clot.
 R *Seorang pekebun mengalami pendarahan tidak henti setelah kakinya tercedera semasa berkebun.*

Apakah akan terjadi jika darahnya tidak dapat membeku?

- A Blood pressure decreases
Tekanan darah menurun
- B Blood capillaries enlarge
Kapilari darah membesar
- C The rate of heart beat increases
Kadar denyutan jantung bertambah
- D The rate of respiration increases
Kadar respirasi bertambah

19. The diagram shows the concentration of antibody in the blood after two injections of antiserum.

F *Rajah menunjukkan kepekatan antibody dalam darah selepas dua suntikan*
 R *antiserum*

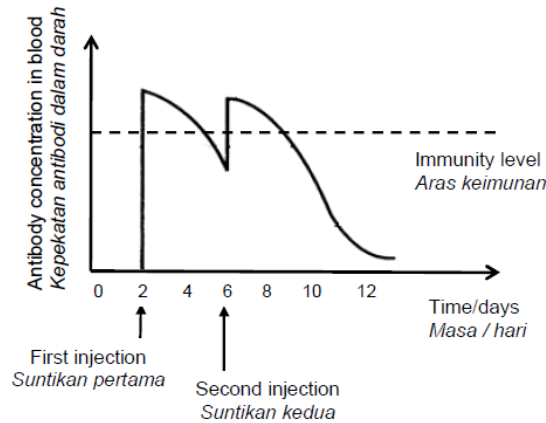


What type of immunity is shown in the diagram?

Apakah jenis keimunan yang ditunjukkan oleh graf dalam rajah ?

- A Acquired active immunity
Keimunan aktif buatan
- B Acquired passive immunity
Keimunan pasif buatan
- C Natural active immunity
Keimunan aktif semulajadi
- D Natural passive immunity
Keimunan pasif semulajadi

20. The diagram shows the concentration of antibodies in a patient's blood after being immunized
 A *Rajah menunjukkan kepekatan antibodi dalam darah pesakit selepas diberi*
 S *immunisasi*



Which of the following is **true** about the immunity shown?
*Antara yang berikut, yang manakah **benar** tentang keimunan yang ditunjukkan ?*

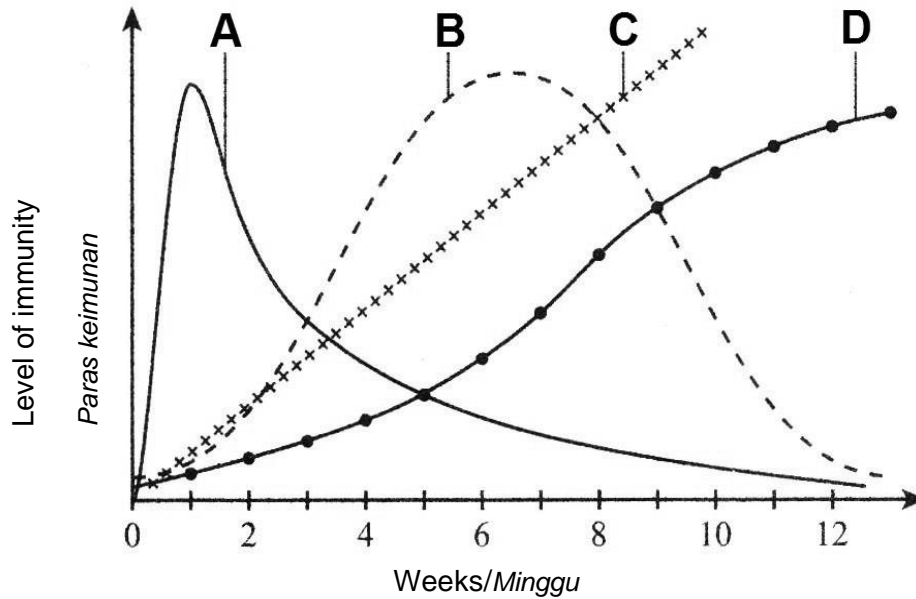
- I. It gives temporary protection
la memberi perlindungan sementara
- II. Antiserum is injected into the patient's body
Antiserum disuntik dalam badan pesakit
- III. It gives immediate immunity against the disease
la memberi keimunan sementara menentang penyakit
- IV. White blood cells are stimulated to produce antibody
Sel darah putih dirangsang untuk menghasilkan antibodi

A	II and III only
B	I, II and III only
C	II, III and IV only
D	I, II, III and IV

21. The graph in the diagram shows several types of immunities
Graf dalam rajah menunjukkan beberapa jenis keimunan.

A
S

Which one best represents passive immunity?
Yang mana satukah yang paling baik mewakili keimunan pasif?



22. Which hereditary disease occurs due to lack of certain clotting factors in the blood?

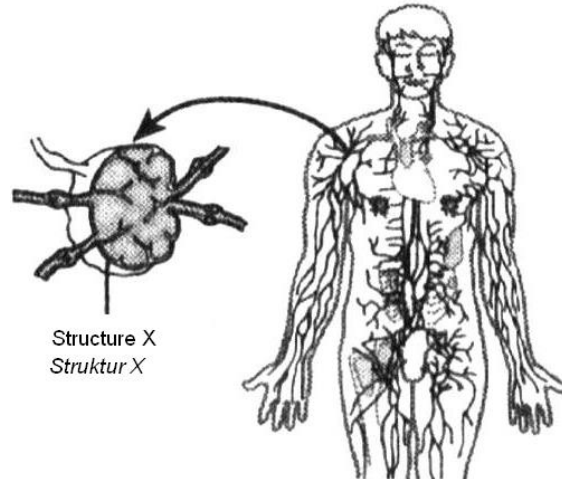
P
S

Penyakit keturunan yang manakah yang berlaku akibat kekurangan faktor pembekuan darah tertentu di dalam darah?

A	Embolism <i>Embolisme</i>
B	Thrombosis <i>Trombosis</i>
C	Haemophilia <i>Hemofilia</i>
D	Arteriosclerosis <i>Arteriosklerosis</i>

23. The diagram shows the lymphatic system.
Rajah menunjukkan sistem limfa.

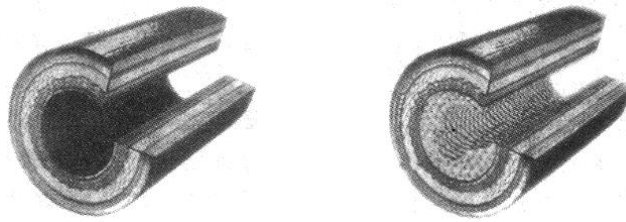
P
T



Which of the following are functions of structure X?
Antara berikut manakah merupakan fungsi struktur X?

- I It filters out foreign particles
la menapis keluar partikel asing.
 - II Macrophages in X engulf and destroy bacteria
Makrofaj di X mengepung dan memusnahkan bakteria.
 - III Lymphocytes in X produce antibodies to destroy antigens
Limfosit di X menghasilkan antibody untuk memusnahkan antigen.
 - IV It prevents accumulation of tissue fluid
la menghalang pengumpulan cecair tisu.
- A I and III only
 - B I, II and III only
 - C I, II and IV only
 - D II, III and IV only

- 24 The diagram shows a cross-section of the coronary artery of individuals X and Y.
Rajah menunjukkan suatu keratan rentas arteri koronari bagi individu X dan individu Y.



Individual X
Individu X

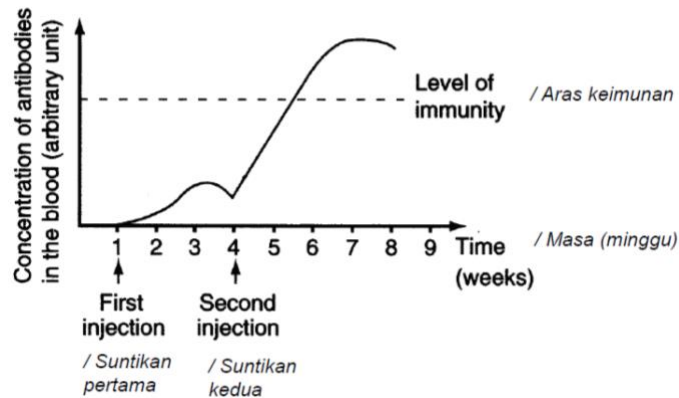
Individual Y
Individu Y

Which food should be avoided by individual Y?
Makanan manakah yang perlu dielakkan oleh individu Y?

- A Fish / Ikan
- B Bread / Roti
- C Orange / Oren
- D Beef burger / Burger daging

- 25 Graph show a type of immunity.
Graf menunjukkan sejenis keimunan

A
S

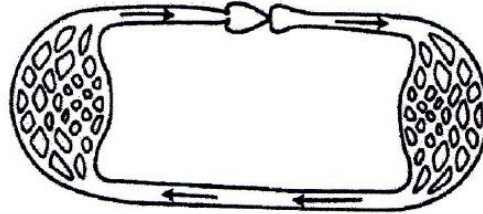


- Which of the following statements is true about the graph?
Antara pernyataan berikut, yang manakah benar tentang graf tersebut?

- A** Both injections contain serum that can raise antibody level
Kedua-dua suntikan mengandungi serum yang boleh meningkatkan aras antibodi
- B** Second injection is required to boost level of immunity
Suntikan kedua diperlukan untuk meningkatkan aras keimunan
- C** Both injections contains pathogen which control production of antibody
Kedua-dua suntikan mengandungi patogen yang mengawal penghasilan antibodi
- D** Second injection contains higher level of antibody.
Suntikan kedua mengandungi aras antibodi yang lebih tinggi
- 26 Which type of immunity is obtained by injecting antiserum into the body?
Apakah jenis keimunan yang akan diperolehi dengan menyuntik antiserum ke dalam badan
- A** Passive artificial immunity
Keimunan pasif buatan
- B** Passive natural immunity
Keimunan pasif semula jadi
- C** Active artificial acquired immunity
Keimunan aktif buatan
- D** Active natural acquired immunity
Keimunan aktif semula jadi

27. Diagram shows a type of a circulatory system
Rajah menunjukkan sejenis sistem peredaran darah

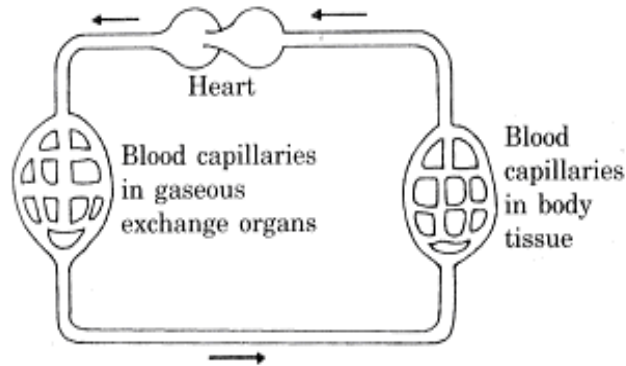
P
S



- | | |
|------------------------|------------------------|
| A Fish / Ikan | B Frog / Katak |
| C Bird / Burung | D Worm / Cacing |

28. The diagram shows a blood circulatory system of an animal.
Rajah menunjukkan sistem peredaran darah bagi suatu haiwan

A
S



Which of the characteristics is true about the blood circulatory system both in man and the animal in the diagram?

Antara ciri-ciri berikut yang manakah benar tentang S sistem peredaran darah manusia dan haiwan pada rajah di atas

- A** Heart pumps out a mixture of oxygenated and deoxygenated blood
Jantung mengempam campuran darah beroksigen dan terdeoksigen
- B** Blood enters the gaseous exchange organ at low pressure
Darah yang memasuki organ pertukaran gas bertekanan rendah
- C** It is a double blood circulatory system
Merupakan sistem peredaran darah ganda dua
- D** It is a closed blood circulatory system
Merupakan sistem peredaran darah tertutup

